



REYGAR

BareFLEET

VESSEL REMOTE MONITORING



WHY BareFLEET?



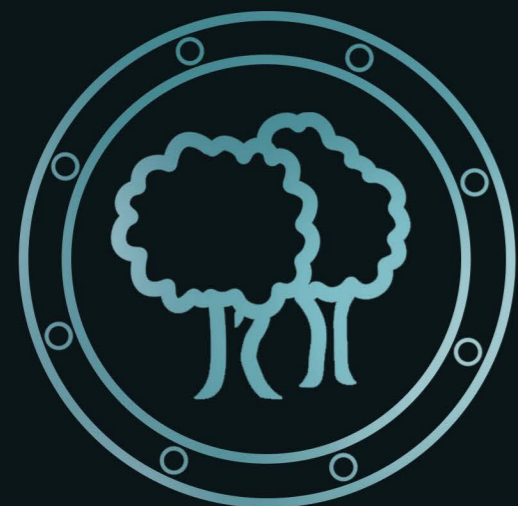
Monitor VMMS Motion

- Motion sickness on passage
- Motion during crew transfer
- Bow fender impact force
- Whole body vibration in cabin
- Sea state data integration
- Deck video remote access



Safeguard Machinery Health

- Critical alarm live email alerts
- Daily engine hours
- Engine room daily trend readings
- Interface to all engine types
- Thrusters, foils, ballast, winches etc
- Planned Maintenance API



Reduce Fuel & Emissions

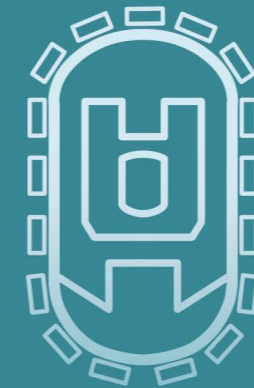
- Accurate vessel fuel consumption
- CO2, NOX, SOX emissions
- Fleet Decarbonisation Dashboard
- Fuel efficiency vs speed and activity
- Live on-vessel fuel efficiency feedback

WINDOW ON BOAT DATA

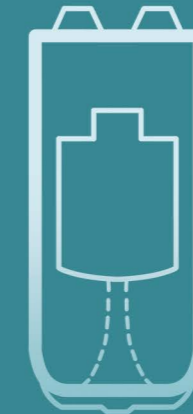
OUR CUSTOMERS

Our customers operate commercial fleets, off-shore windfarms, ports and harbours', ferry services and shipyards.

Tug/Workboat



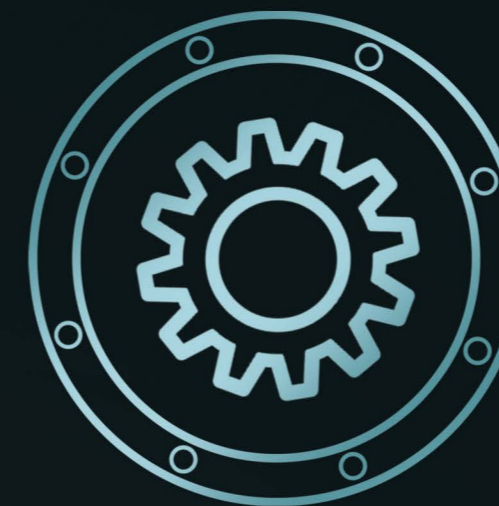
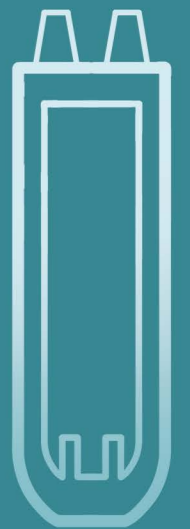
CTV



Pilot



Fast Ferry



API Integrations

- 3rd party software integration
- Planned maintenance systems
- Fleet management systems
- Power BI integration (coming soon)
- Examples Helm, Crewsmart, Marad



Vessel Digital Logbook

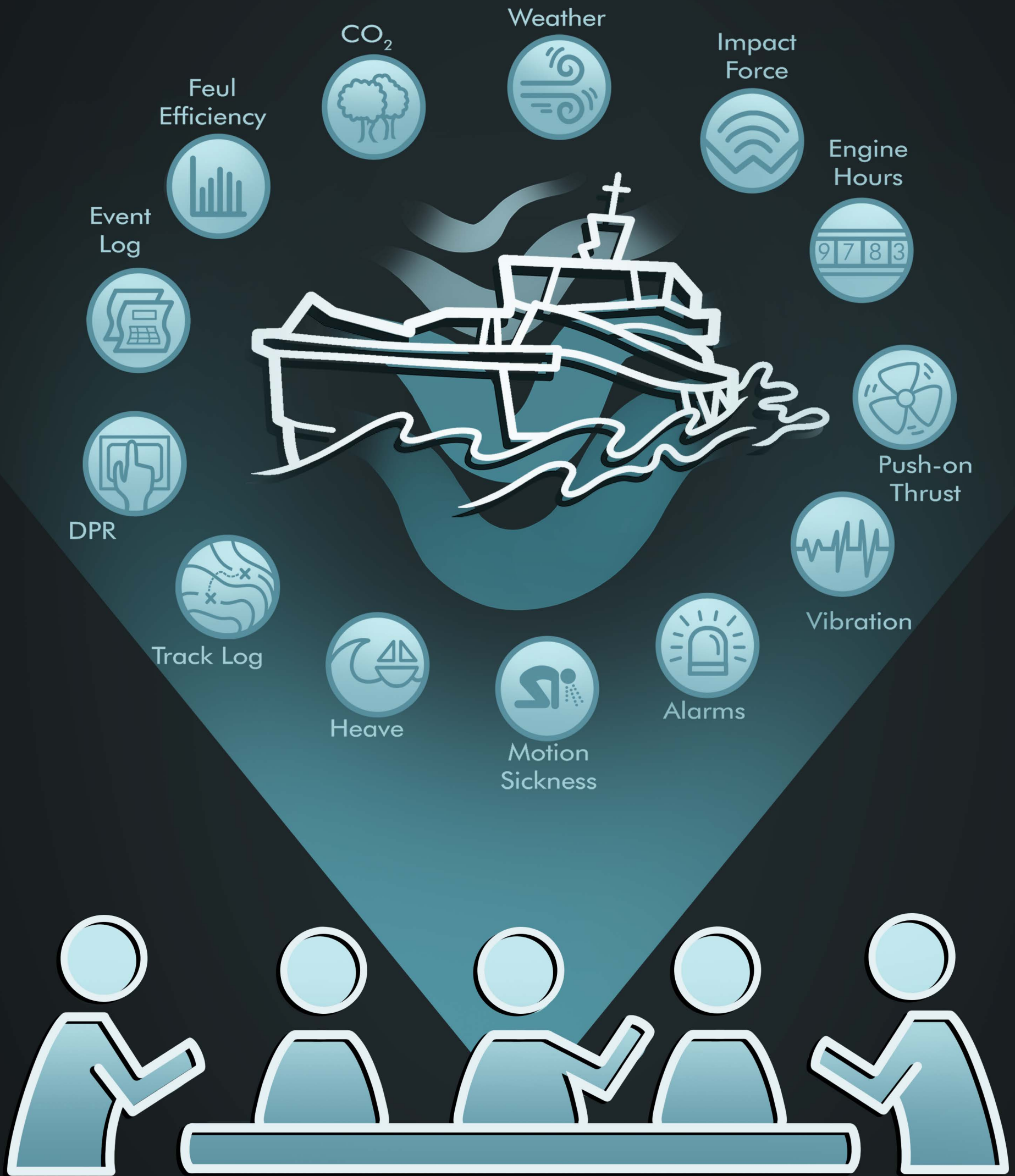
- Log activities, incidents digitally
- Automated DPR reporting
- Integrate log with measurements
- Crew logged with measurements



Analyse Fleet Performance

- Automated vessel activity log
- Rich map / activity visualisations
- Live + historic measurement analysis
- Up to 10Hz data rate
- Inter-vessel performance comparator
- Leader board and trending analytics

VESSEL DATA FROM BOAT TO BOARDROOM



01453 368008



info@reygar.co.uk



www.reygar.co.uk